

The ELPROCAD family of programs produced by PROCAD Systems AB is the preferred tool in the Nordic countries for electrical engineering designers and has been marketed and under continuous development since 1984. ELPROCAD is the registered name of a complete series of powerful programs, behind which is the technical knowledge of a team of engineers with long experience of electrical technology. The programs are sold in the Nordic market in particular, and in a number of other European countries. With these programs, we offer the electrical designing profession powerful, user-friendly, flexible and cost-effective aids for the preparation of electrical engineering documentation.

## ELPROCAD 16 Pro

When we developed the method for using **ELPROCAD16 Pro** our first principle was that it is you as the designer who is to have complete control over the drawing procedure. It is on the drawing you place symbols representing the different units of apparatus which together constitute the product or system you are designing. The program then helps you by presenting information confirming your selection. This information can consist of signal and sheet references, cross references, different kinds of reports, apparatus lists etc. according to your specified requirements.

In this product sheet, you can read more about what **ELPROCAD16 Pro** can help you with.

### Document types

**ELPROCAD16 Pro** makes available to the draughtsman, symbols, symbol assemblies (e.g. complete motor groups), drawing and document forms and commands for preparing: **Circuit diagrams, Main circuit diagrams, Assembly drawings, External connection diagrams and Single-line diagrams.**

Information about the material selected is automatically assembled for presentation in different reports such as: **Apparatus lists, Ordering lists, and Estimate sheets.**

If you have the auxiliary programs **Connect Internal** and **Connect External** you can also obtain reports assembled by the program in the form of, for examples: **Terminal block lists, Cable lists, Internal connection tables and External connection tables.**

### Symbols, drawing environment

The symbols used in **ELPROCAD16 Pro** are in accordance with the item designation standard IEC 1082 and the symbol standard IEC 617. The program supports both the function- and location-oriented drawing modes. In addition, it is provided with functions enabling the user to make his own symbols, drawing forms, document forms and scales.

Symbols are selected directly from tool bars with the help of icons (symbol illustrations) on the button and a tooltip, or from an icon menu with large and clear symbol illustrations with explanatory text, presented in a dialog box.

You can specify that item designations, terminal block numbers etc. are to be incremented automatically when you insert new symbols.

Connection lines are automatically opened when a symbol is inserted and reinstated if the symbol is moved or erased.

### When inserting a symbol in your drawing, you can see...

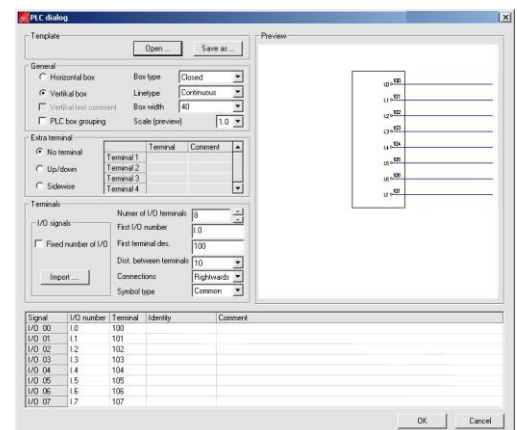
- the material and apparatus available in your apparatus database and then select that you decide to use. You can add to or otherwise revise your selection during the progress of the work.
- which main and auxiliary contacts are available in a specific contactor etc.
- which item designations have been used in the current project.
- which apparatus cabinet names (locations) have been used in the project.

You can specify that item designations, terminal block numbers etc. are to be incremented automatically when you insert a symbol.

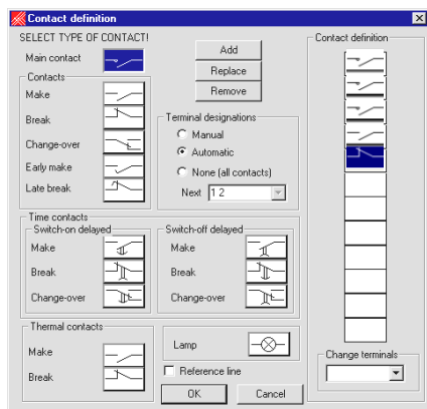
Information about the symbols, (attributes) is handled effectively in **ELPROCAD16 Pro**. You can sort and replace attribute text for all of a group of symbols which you have marked. You can also localize and replace a complete text string anywhere in your project documentation.

If you right-click on a symbol, line or text, a selection of functions for this object is presented.

You can obtain a preview in the PLC dialog showing the exact appearance of the I/O module before you insert it in the drawing. You can also save the appearance of the I/O module and import and export I/O lists.



You can predefine the main and auxiliary contacts with terminal designations in a contactor, circuit breaker or protective motor switch etc. in the apparatus database. This means that the correct contact symbol is automatically drawn when the main symbol is inserted.

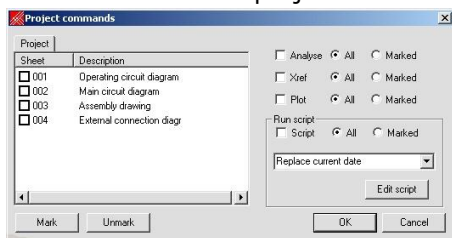


When the circuit diagram is ready, you can import apparatus to the assembly drawing where the components are drawn to scale with the dimensions specified in the apparatus database.

## Project management etc.

You can easily find and open any particular sheet in your project. The list of sheets can be sorted with respect to sheet number, function or document name.

The project automation dialog enables you, for examples, to insert cross references and to print all or any sheet as required. You can also run scripts, program macros such as, for examples, replacing drawing forms, changing the language of the commentary text or replacing a text in the title block of all the sheets in the project.



The basic settings for the program are saved in each project. The settings for colour, texts, form types, symbol standard and apparatus databases are saved together with such project information as client identity, project name and drawing number.

When inserting drawing forms and when assembling reports, this project information is automatically written in the title block.

## Cross references

**ELPROCAD16 Pro** creates cross references on-line for signals, relay coils, contacts etc. and automatically adds continuation sheet numbers to the title blocks of preceding drawings. Signal references and cross references include both sheet number and coordinates on the drawing e.g. 002/8A. You can go to the relevant signal or symbol if you right-click on a reference. The program can perform and present a complete cross reference analysis, check that apparatus and contacts have not been used previously and report any error detected. The error on your drawing will be indicated if you click on the line in the report relating to the error.

**ELPROCAD16 Pro** has a unique sheet reference function. If you mark, for example a relay coil in the drawing, all of its contacts will be shown in a list which can be sorted in different ways. If you point to a contact in this list, the program changes the sheet on the display and points out the symbol. This feature is of particular value to designers and for fault tracing.

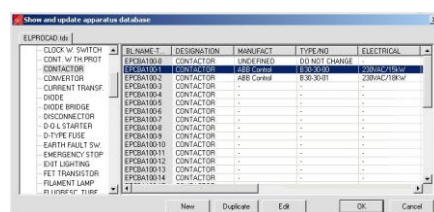
## Reports

**ELPROCAD16 Pro** provides you with a good overview of your designs by assembling the material you select in different types of reports.

You can simply modify all these reports by right-clicking and choosing to delete a column or to add a new column. You can change column headings, column widths or filter the contents of a column.

You can go to the corresponding symbol on your drawing by right-clicking an apparatus in a report.

When you insert a symbol in your drawing, you select the apparatus, including any accessories, directly from the apparatus database. You can select material for your project which is not to be shown on your drawing, but which is to be included an ordering list, to obtain as complete a list as possible.



If you change any material in your drawing, you use the *Analysis*

function which automatically updates all the documents in the project in accordance with the new material. You include the material which you use most frequently in your projects in your standard apparatus database. You can progressively update this database. You can prepare several databases for use individually or together in different projects or in a single project

## Communication

It is easy to transfer information from **ELPROCAD16 Pro** programs to other programs:

- Other programs in the ELPROCAD-family are completely compatible with the drawings prepared with **ELPROCAD16 Pro**.
- The drawing files follow the AutoCAD standard format (.dwg) and can therefore be used with different AutoCAD-based programs.
- The import/export function permits communication with most of the better-known database programs, Approach, Access, Excel etc.

## Help

Even if the program is easily used, assistance may be needed at some time. The program is supplied with a detailed User's manual and a training brochure with appropriate exercises.. An easily understood Help file is included in the program.

## System requirement

**ELPROCAD16 Pro** 16.2 functions together with AutoCAD 2007-2009, ver 16.4 with 2010-2011 and the program have no greater performance requirement than that of your CAD-programs.

The program functions together with Windows XP/Vista/Windows 7 (ej 64-bit), and is available in Swedish and English language versions.

## Dealer:



## A product from:

**PROCAD Systems AB**  
Kraftlinjegatan 14, SE-721 36  
Västerås, Sweden

email: [info@elprocad.com](mailto:info@elprocad.com)  
WEB-site: [www.elprocad.com](http://www.elprocad.com)