

The ELPROCAD family of programs produced by PROCAD Systems AB is the preferred tool in the Nordic countries for electrical engineering designers and has been marketed and under continuous development since 1984. ELPROCAD is the registered name of a complete series of powerful programs, behind which is the technical knowledge of a team of engineers with long experience of electrical technology. The programs are sold in the Nordic market in particular, and in a number of other European countries. With these programs, we offer the electrical designing profession powerful, user-friendly, flexible and cost-effective aids for the preparation of electrical engineering documentation.

ELPROCAD LT Basic 6

When we developed the method for using **ELPROCAD LT Basic** our first principle was that it is you as the designer who is to have complete control over the drawing procedure, the drawing being the basic factor in your design activity.

ELPROCAD LT Basic is suitable for those who need an easily used and effective tool for preparing electrical documentation.

The program can also be used for the maintenance of documentation prepared using other members of the ELPROCAD family or - why not? - as an introductory purchase, at a reasonable cost, as a means of learning the advantages of the use of more advanced CAD in the preparation of electrical documentation.

This product sheet presents information about how **ELPROCAD LT Basic** can be of help to you.

Document types

ELPROCAD LT Basic makes available to the draughtsman, symbols, symbol assemblies (e.g. complete motor groups), drawing and document forms and commands for preparing:

Circuit diagrams

Main circuit diagrams

Assembly drawings

External connection diagrams

Single-line diagrams

Symbols, drawing environment

The symbols used in **ELPROCAD LT Basic** are in accordance with the item designation standard IEC 1082 and the symbol standard IEC 617.

The program supports both the function- and location-oriented drawing modes. In addition, it is provided with functions enabling the user to make his own symbols, drawing forms, document forms and scales.

Symbols are selected directly from tool bars with the help of icons (symbol illustrations) on the button and a tooltip, or from an icon menu with large and clear symbol illustra-

tions with explanatory text, presented in a dialog box.

You can specify that item designations, terminal block numbers etc. are to be incremented automatically when you insert new symbols.

Connection lines are automatically opened when a symbol is inserted and reinstated if the symbol is moved or erased.

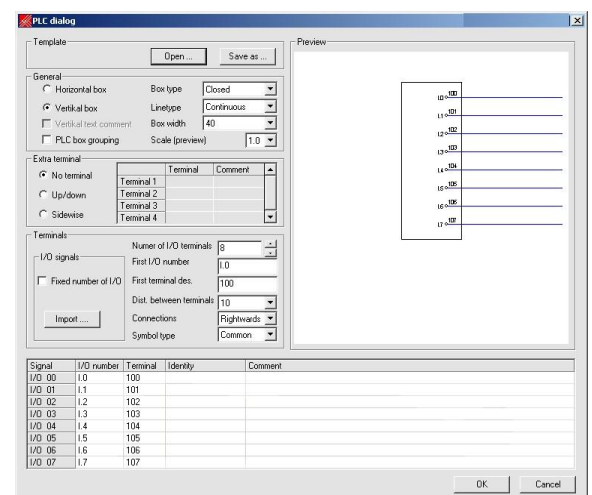
The program remembers values such as the location which are common to a number of symbols. It is then, most often, only necessary to approve the values presented, this considerably simplifying your drawing work.

Information about the symbols, (attributes) is handled effectively in **ELPROCAD LT Basic**. You can sort and replace attribute text for all of a group of symbols which you have marked. Attributes being edited and filled in are marked on the drawing for easy identification.

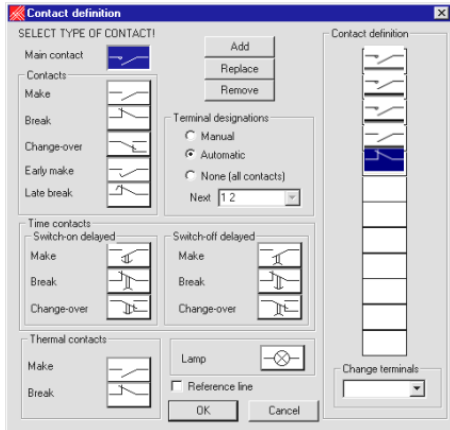
Browsing between the different sheets of in the multi-sheet drawings has been made faster - by now clicking at a + or - button.

You can obtain a preview in the PLC dialog showing the exact appearance of the I/O module before you insert it in the drawing.

You can also save the appearance of the I/O module and import and export I/O lists.



You can easily specify the contact arrangement for a contactor, circuit breaker, protective motor switch etc. Click at the main symbol and then select the contacts required in a dialog box with clear graphic buttons. When you click at *OK*, the contact pattern is drawn automatically at its correct location in your circuit diagram.



When the contacts are drawn in your diagram, they are grouped with the symbol and the assembly is handled as a single symbol incorporating all the contacts and terminals.

The preparation of an assembly drawing is simplified because the DIN rail is automatically opened to accommodate the contactors, circuit breakers etc. you insert.

When you choose to insert several symbols at the same time, you can specify a C-C spacing or a separation distance between the units.

Own symbols

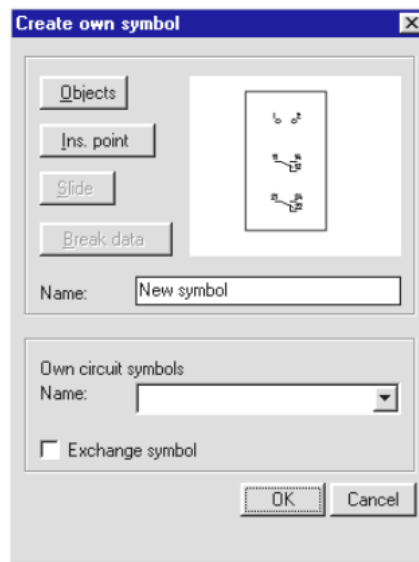
ELPROCAD LT Basic is designed to enable you to construct your own symbols or groups of symbols with the same functionality as the symbols supplied originally with the program.

These own symbols also break lines where they are inserted and the line is reinstated if a symbol is moved or deleted.

An own symbol can also be an assembly of symbols supplied in the program, for examples, a pushbutton with a set of contacts which you use frequently or part of a circuit which you use at many places in your drawing.

Save the whole circuit complete with phase lines and thereby simplify your work.

When you save your symbol, you can give it its own name and create its own icon to simplify access to it.



Project management etc.

You can adjust the settings in the program as supplied to suit your own purposes. You can choose to have different text heights and colours for, for examples, item-, terminal- and signal designations. Settings for symbol standard, type of form, cable balloon, and core marking can also be varied.

Project information such as client name, project name, drawing number, designer and draughtsman can also be saved in the basic settings. When document forms are prepared, the project information is proposed as the text in the title block and can be approved or adjusted as required.

Cross references

When a symbol is inserted in a drawing, **ELPROCAD LT Basic** automatically creates attributes which are intended to be filled in manually in cross-references and signal references to a symbol.

You can fill in the reference when you insert the symbol. You can also choose to fill in all your references subsequently and then use a function which steps around the symbols you have selected.

Your circuit diagram is also prepared so that in **ELPROCAD LT Pro** (see below), you can, by clicking a few buttons, request automatic updating of all your cross references.

Signal references and cross references can be made to sheet number and scale coordinates on the form. A signal which, for example, is located on sheet 002, at column 8 and line A is given the reference 002/8A.

Communication

It is easy to transfer information from **ELPROCAD LT Basic** programs to other programs:

Other programs in the ELPROCAD-family are fully compatible with the drawings prepared with **ELPROCAD LT Basic**.

The drawing files are in accordance with the AutoCAD standard format (.dwg) and can therefore be used by different AutoCAD-based programs.

Help

Even if the program is easily used, assistance may be needed at some time. The program is supplied with a detailed User's manual and a training brochure with appropriate exercises.. An easily understood Help file is included in the program.

A more powerful program?

Do you need a more powerful program to make your work even more effective? You should then consider purchasing **ELPROCAD LT Pro**. This is a more advanced program in the ELPROCAD product family which, in addition the **ELPROCAD LT Basic** functions contains a series of extra functions. With this program, you can automatically generate apparatus lists, cross references and sheet references, import/export apparatus databases, simplify project management etc. See the separate product sheet for **ELPROCAD LT Pro**.

System requirement

ELPROCAD LT Basic 6.2 functions together with AutoCAD or AutoCAD LT 2007-2009, ver 6.4 with 2010-2011 and the program have no greater performance requirement than that of your CAD-programs.

The program functions together with Windows XP/Vista/Windows 7 (not 64-bit), and is available in Swedish and English language versions.

A product from:

PROCAD Systems AB
 Kraftlinjegatan 14, SE-721 36
 Västerås, Sweden
 email: info@elprocad.com
 WEB-site: www.elprocad.com